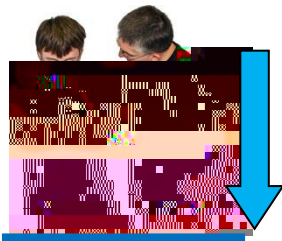


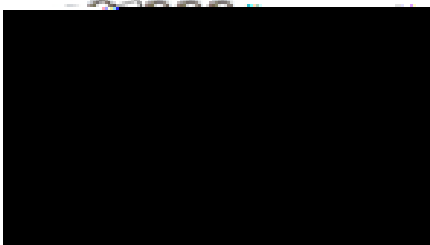


Or you will be in a group with PBS and usual care

You will not choose which group you will be in. That will be decided by chance, like tossing a coin.



We want to find out whether or not PBS can help people who have complex behaviour



You will be in the trial for **12 months**



Research

Positive Behaviour Support (PBS)

Many people with learning disabilities have complex behaviour

This can have a serious effect on

having to take long-term medication

having to go into hospital

upsetting normal daily activities



What is PBS?

Community learning disability services may find it hard to give the right help to people with complex behaviour

Some research suggests that Positive Behaviour Support (**PBS**) can help people who have complex behaviour

Complex behaviour can improve, and this could make your behaviour can improve



What does our research look at?

Our research will look at

how well **PBS** works for the person with a learning disability

if using **PBS** can save services money whilst improving care

If we can show that using **PBS** is better than **what we were doing before**, this can



Training

In this **trial**, health staff will have agreed **training** in **PBS**



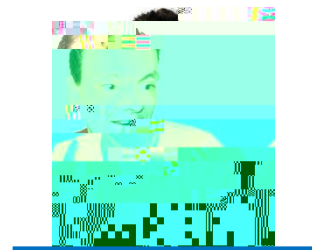
PBS experts will have a handbook for this training.



The handbook will give details of how to



understand complex behaviour



find new ways of working with people



use these new ways of working with people when supporting them

keep records about if these new ways are making a difference

People in our research

We will invite people to take part in our research.

We will invite

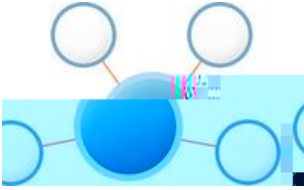
20 community learning disability services

260 people with mild to severe learning disabilities and complex behaviour





using services



day-to-day life



mental health



anger



stress on family and paid carers





We will go back with
questionnaires after

6 months, and

12 months



Who will we talk to?



We will talk to some people with learning disabilities who have had PBS and their



family carers and paid carers

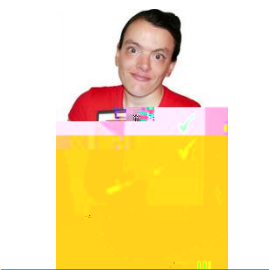


staff and managers

We will ask them about



what they think of **PBS**



the best way of using **PBS**
when we support people



We will follow rules when we do research these are called research and clinical governance guidance